

**BOAT-CAMPER-TRAILER.** Thirteen-foot fiber glass boat folds up to 77-inch trailer, is put in water by removing wheels, unfolding hull sections. Aluminum rods hold sections apart to sleep two in 200-pound rig. Aqua Trailers, Inc., Spokane, Wash. Price: \$695.



**MITY-LITE** flashlight (arrow) floats and can be used underwater. Plastic case is corrosion, damage resistant. Light can be hand-carried, worn at neck, etc., by cord.



**INFLATABLE MARKER** for helicopter landing sites is being tested by U.S. Marines. It can also be used as emergency marker for mountaineers, rangers or sailors at sea.

## .....WHAT'S NEW in Boating



**CAMPER-SLEEPER-BOAT** is two-wheel fiber-glass trailer with sleeping compartment for two inside and entrance through side door. Tailgate drops down to serve as work table and expose kitchenette containing stove, icebox, and storage for groceries. Nested on top is an eight-foot fiber-glass boat. Cost, \$895. Trailorboat Engineering Co., 923 Francisco Blvd., San Rafael, Calif.



**UNSINKABLE PRAM** has nine-foot hull of foam sandwiched in fiber-glass. It's so buoyant it floats half-full, but you can drain it by pulling a plug. "Squall" rowboat is \$395; sailboat, with sail, \$595. Nautical Engineering Corp., West St., Fall River, Mass.



**FLAG BUOY** warns other boats to keep away when you are skin-diving below. Its 36-inch mast and 12-inch weighted keel telescope into 6-inch-diameter float for carrying. Plastic, \$9.95; copper, \$14.95. Safety Float Corp., 35 S. 5 St., Waterbury, Conn.



**FLOATING PADDLE** has a seamless blade made of Olin hollow aluminum plate, inflated hydraulically and filled with urethane foam. It won't sink, splinter, or warp, is less than half the weight of spruce. \$9.95. Norton Mfg. Co., 2335 W. St. Paul Ave., Chicago.



### Boat Snaps Onto Roof of Camping Trailer

One of the newest of the multipurpose camping trailers is a reinforced plastic model that carries an eight-foot dinghy snapped onto the roof. The matched components are built of fiberglass and Vibrin;

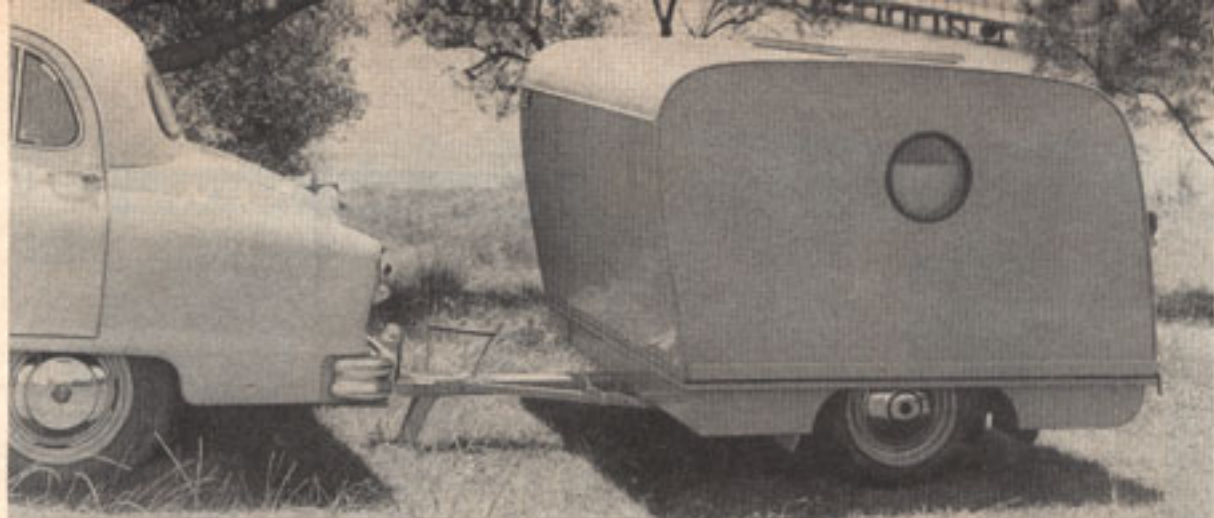
the trailer sleeps two inside, has a separate cooking and storage area in the rear. The 75-pound boat lifts easily on and off, and latches in place. Built by the Trailorboat Co., San Rafael, Calif., it sells for \$895.



### Thermoelectric Outboard

Making recreational use of a recent scientific development, this fisherman is driving his boat on a gas flame! His electric trolling motor is powered by a thermoelectric generator instead of the usual storage battery.

The generator, the box on the starboard side of the boat, delivers power continuously by maintaining a temperature difference across the semiconductor materials inside. The heat is supplied by a small propane gas flame; water carried through the hose over the stern cools the low-temperature side. The experimental outfit was built by Westinghouse labs.

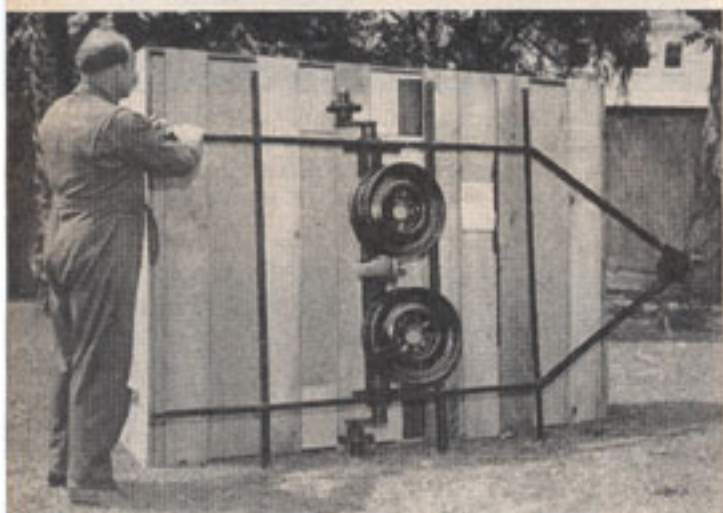


**Folding trailer opens like jackknife.** This Australian mobile home rides in a compact six-foot-square size  $5\frac{1}{4}$  feet high, but at the camping site it expands to a nine-foot length with a comfortable  $6\frac{1}{4}$  feet of head-room. It's made—with built-in furniture—in three nesting shells hinged and counterbalanced to open or close with one movement.

**Tilting gondola grows stilts.** Delivery of coal and other bulk

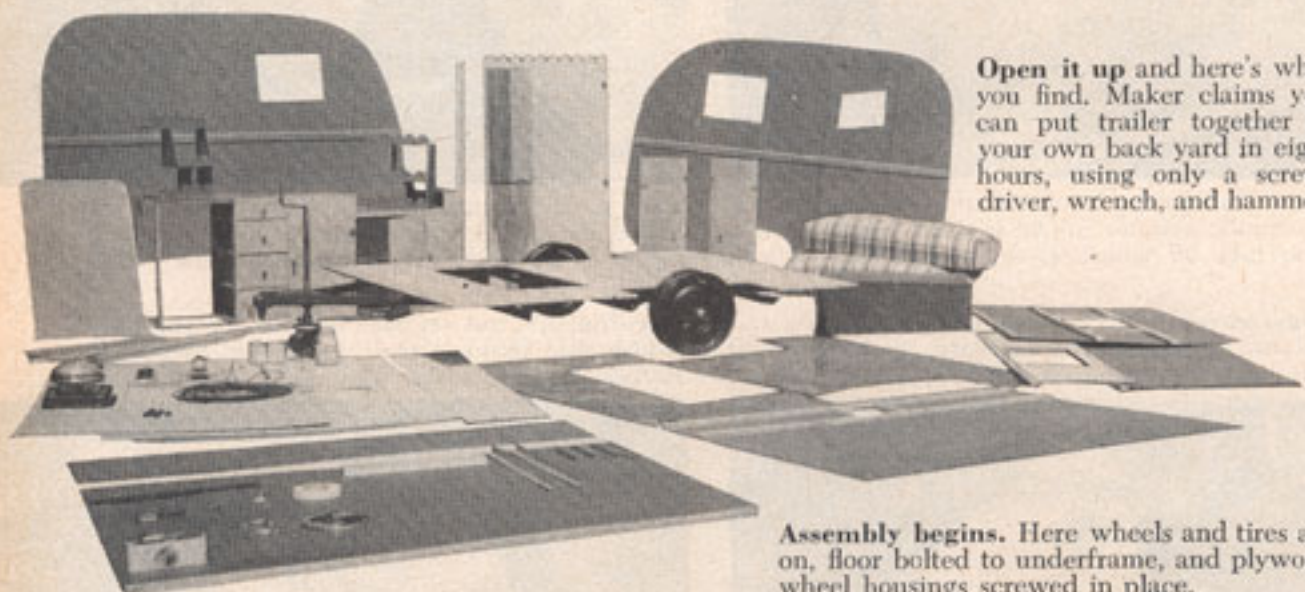


Big one or little, take your choice. Both trailers are sold knocked down for home assembly.



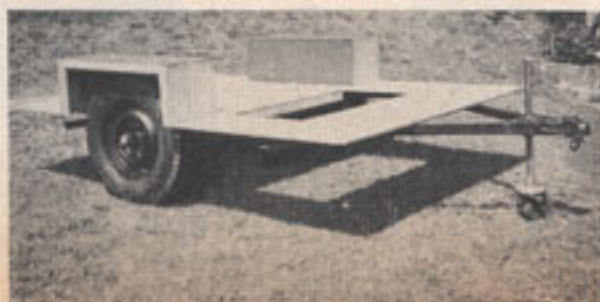
## Trailer Comes in a Package

Here's what you get. Crated for freight shipment, big trailer, at left, weighs 1,000 lb. Here, 16" Ford wheels are simply wired to the underframe. Tires and tubes are not furnished.



Open it up and here's what you find. Maker claims you can put trailer together in your own back yard in eight hours, using only a screwdriver, wrench, and hammer.

Assembly begins. Here wheels and tires are on, floor bolted to underframe, and plywood wheel housings screwed in place.



**E**VENTUALLY, it had to come—a trailer a man handy with hammer, wrench, and screwdriver could assemble in the back yard. Now, Prefab, Inc., of Los Angeles, offers you a choice of two—the Cub Senior® and the Cub Sportsman®.

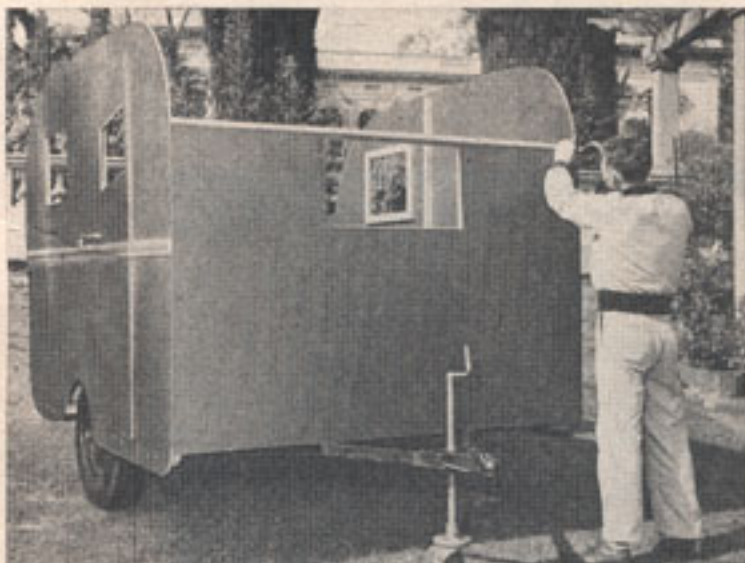
All you must do is unwire the crate and follow detailed instructions. The parts are all pre-cut and everything is furnished except tires, tubes, and paint.

Senior boards the train in Los Angeles at \$395, Sportsman at \$279.50. You pay the freight, but shipping knocked down saves more than half on delivery charges.

The house trailer includes all conveniences for living on the road. The less de-luxe Sportman, designed chiefly for hunting and fishing trips, has an aluminum body and weighs about 450 lb. A mattress on the floor provides comfortable sleeping.

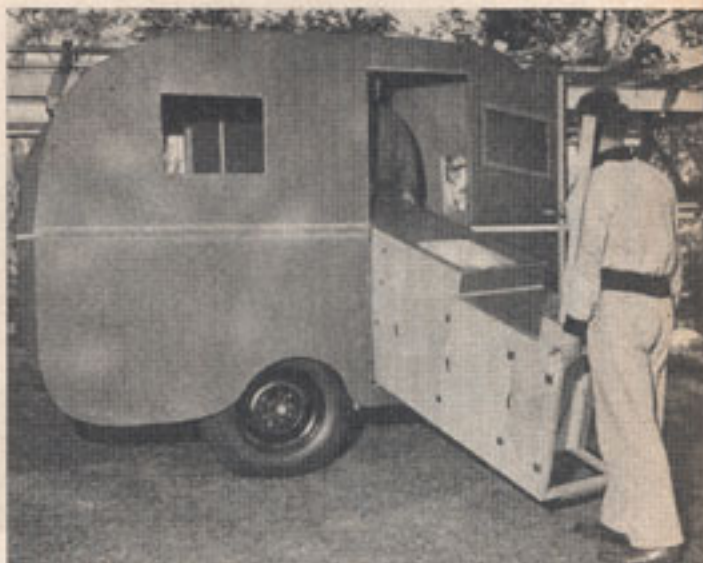


**Top curves into place** after side walls and front bulkhead have been attached. All seams are caulked to keep out water. Sides and top are composition board, reinforced with wood.



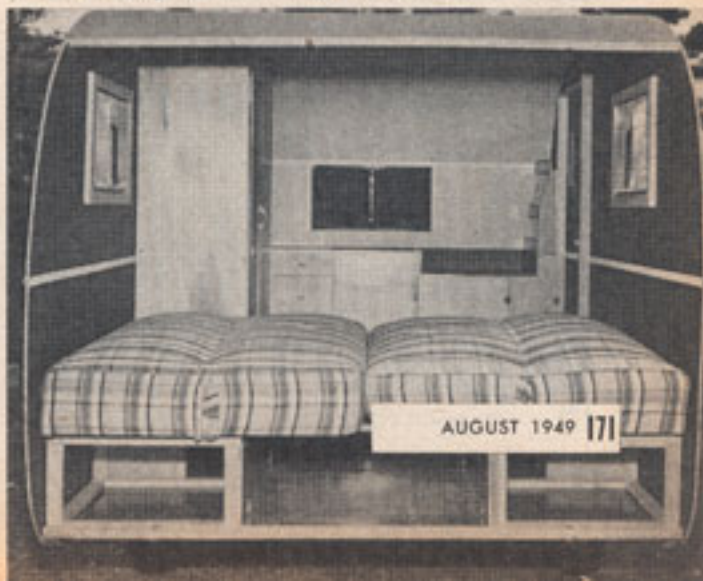
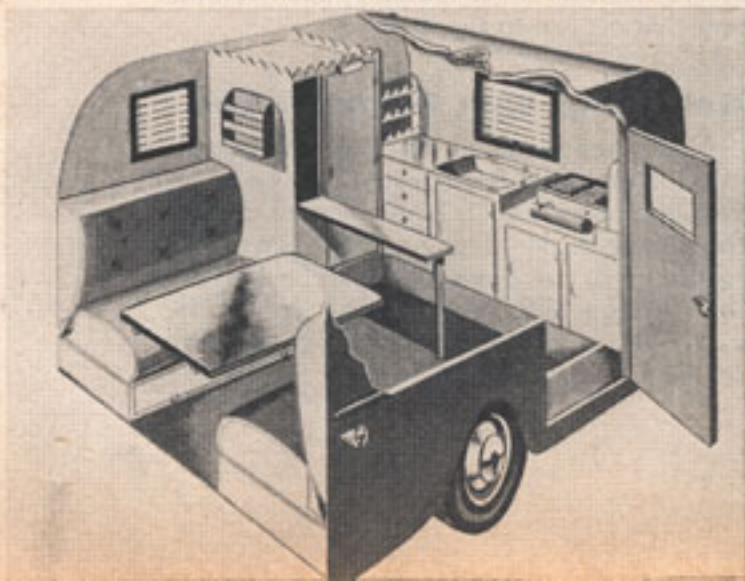
**Walls are nailed temporarily**, then permanently secured with screws. All units are predrilled for screws and bolts. Tape is applied over the seams to hide nails and any irregularities.

**Four persons can sit comfortably** on the seats. Inside, the bigger trailer is 8' long and 6' wide and high. Equipment includes a pull-down ironing board and hinged and screened windows.



**In goes the sink assembly.** This includes ice box, aluminum basin, and four drawers. Four other assemblies come with the kit—shelves, table, clothes closet, underseat cabinets.

**Pulled out,** the seats make a double bed. The closet comes already wired for either 6-volt or 115-volt electricity. Detailed instructions make it easy to assemble the trailer.

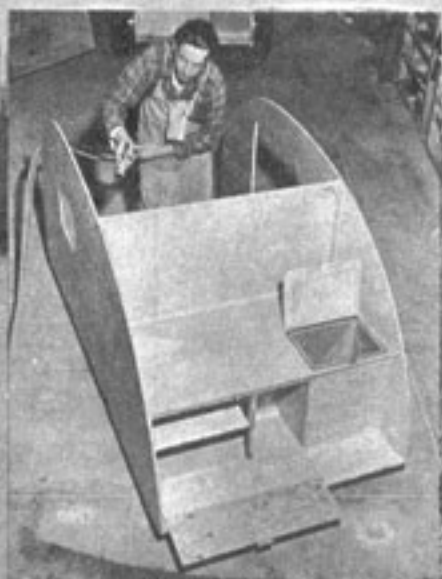


# VEST-POCKET TRAILER

**H**ERE, at last, is a rain and dust proof vest-pocket trailer which combines galley, pantry and sleeping quarters. It's the "Kit-Kamper" and weighs just under 600 lbs. The roomy, two-place berth, containing an inner-spring mattress and full width clothes hamper, has ample head clearance and dressing space. Two screened windows provide cross-ventilation. The rear of the trailer features an insulated 25-pound ice chest, built-in pantry and stove compartment, all completely dust-proofed.



The stain-proof aluminum shell, laminated to plywood, provides insulation against heat and cold. Trailer body receives final touches, below.



It sleeps two persons and is light enough to leave the paving and take to the byways.